



# ROHS TEST REPORT

Product Name:	PTFE SHEET, PTFE ROD, PTFE TUBE, EPTFE SHEET, EPTFE TAPE
Brand Name:	JOINTEFLON
Model Number:	JT-PS JT-PR, JT-PT, JT-ES, JT-EJT
Applicant	JOINTEFLON COMPANY LIMITED
Address	No. 195 Jiushui East Rd. Qingdao Shandong China
Manufacturer	JOINTEFLON COMPANY LIMITED
Address	No. 195 Jiushui East Rd. Qingdao Shandong China
Prepared By:	Shenzhen DL Testing Technology Co., Ltd.
Address:	Part One of 301, A-2 Factory Building, Yalijia Industrial Plant, No. 87, Hengping Road, Yuanshan Street, Longgang District, Shenzhen, China
Report No.:	DL-2020010197R
Test Standard	IEC62321-1: 2013
Comment	Based on the performed tests on submitted samples, the results of Pb, Cd, Hg, Cr(VI), PBBs, PBDEs, DBP, BBP, DEHP, DIBP comply with the limits as set by EU RoHS Directive 2011/65/EU and its amendment Directive EU 2015/863.

Prepared by(Engineer): Alisa Song

Date: Jan. 14, 2020 - Jan. 19, 2020

Approved(Manager): Jade Yang

Date: Jan. 19, 2020

*This test report is based on a single evaluation of one sample of above mentioned products. It is not permitted to be duplicated in extracts without written approval of Shenzhen DL Testing Technology Co., Ltd.*





Test Method:

Test Items	Test Method/ Equipment	MDL	Content	EU RoHS Directive 2011/65/EU and its amendment Directive EU 2015/863
Lead(Pb)	REFER TO	2	N.D.	1000
Cadmium(Cd)	IEC 62321-5:2013. ICP-AES/AAS	2	N.D.	100
Mercury(Hg)	REFER TO IEC 62321-4:2013. ICP-AES	2	N.D.	1000
Hexavalent Chromium(Cr(VI)) by Alkaline extraction	REFER TO IEC 62321:2008. UV-VIS	2	N.D.	1000
Phthalates	IEC 62321-8:2017 Ed.1.0	50	N.D.	---
Mono-bromobiphenyl	REFER TO IEC 62321-6:2015. GC-MS	5	N.D.	---
Di-bromobiphenyl		5	N.D.	
Tri-bromobiphenyl		5	N.D.	
Tetra-bromobiphenyl		5	N.D.	
Penta-bromobiphenyl		5	N.D.	
Hexa-bromobiphenyl		5	N.D.	
Hepta-bromobiphenyl		5	N.D.	
Octa-bromobiphenyl		5	N.D.	
Nona-bromobiphenyl		5	N.D.	
Deca-bromobiphenyl		5	N.D.	
Polybrominated Biphenyls(PBBs)		---	N.D.	
Mono-bromodiphenyl ether	REFER TO	5	N.D.	--
Di-bromodiphenyl ether	IEC 62321-6:2015.	5	N.D.	



Test Items	Test Method/ Equipment	MDL	Content	EU RoHS Directive 2011/65/EU and its amendment Directive EU 2015/863
Tri-bromodiphenyl ether	GC-MS	5	N.D.	
Tetra-bromodiphenyl ether		5	N.D.	
Penta-bromodiphenyl ether		5	N.D.	
Hexa-bromodiphenyl ether		5	N.D.	
Hepta-bromodiphenyl ether		5	N.D.	
Octa-bromodiphenyl ether		5	N.D.	
Nona-bromodiphenyl ether		5	N.D.	
Deca-bromodiphenyl ether		5	N.D.	
Polybrominated Diphenyl Ethers(PBDEs)			---	
Dibutyl phthalate (DBP)	REFER TO BS EN 14372:2004, GC-MS	30	N.D.	1000
Butylbenzyl phthalate (BBP)		30	N.D.	1000
Di-(2-ethylhexyl) Phthalate (DEHP)		30	N.D.	1000
Di-iso-butyl phthalate (DIBP)		30	N.D.	1000



## Tested Sample/Part Description:

1 White soft rubber

2 White plastic

## Test Results

Test Items	Result Unit (mg/kg)						Acceptable Limit Unit (mg/kg)
	1	2	3	4	5	6	
Lead (Pb)	N.D.	N.D.	/	/	/	/	1000
Cadmium (Cd)	N.D.	N.D.	/	/	/	/	100
Mercury (Hg)	N.D.	N.D.	/	/	/	/	1000
Hexavalent Chromium (Cr(VI))	N.D.	N.D.	/	/	/	/	1000
<b>Polybrominated Biphenyls(PBBs)</b>	N.D.	N.D.	/	/	/	/	1000
Monobromobiphenyl	N.D.	N.D.	/	/	/	/	--
Dibromobiphenyl	N.D.	N.D.	/	/	/	/	--
Tribromobiphenyl	N.D.	N.D.	/	/	/	/	--
Tetrabromobiphenyl	N.D.	N.D.	/	/	/	/	--
Pentabromobiphenyl	N.D.	N.D.	/	/	/	/	--
Hexabromobiphenyl	N.D.	N.D.	/	/	/	/	--
Heptabromobiphenyl	N.D.	N.D.	/	/	/	/	--
Octabromobiphenyl	N.D.	N.D.	/	/	/	/	--
Nonabromobiphenyl	N.D.	N.D.	/	/	/	/	--
Decabromobiphenyl	N.D.	N.D.	/	/	/	/	--
<b>Polybrominated Diphenyl Ethers(PBDEs)</b>	N.D.	N.D.	/	/	/	/	1000
Monobromodiphenyl ether	N.D.	N.D.	/	/	/	/	--
Dibromodiphenyl ether	N.D.	N.D.	/	/	/	/	--
Tribromodiphenyl ether	N.D.	N.D.	/	/	/	/	--



Tetrabromodiphenyl ether	N.D.	N.D.	/	/	/	/	--
Pentabromodiphenyl ether	N.D.	N.D.	/	/	/	/	--
Hexabromodiphenyl ether	N.D.	N.D.	/	/	/	/	--
Heptabromodiphenyl ether	N.D.	N.D.	/	/	/	/	--
Octabromodiphenyl ether	N.D.	N.D.	/	/	/	/	--
Nonabromodiphenyl ether	N.D.	N.D.	/	/	/	/	--
Decabromodiphenyl ether	N.D.	N.D.	/	/	/	/	--

Test Items	Result Unit (mg/kg)						Acceptable Limit Unit (mg/kg)
	1	2	3	4	5	6	
Di-isobutyl phthalate(DIBP) CAS #:84-69-5	N.D.	N.D.	/	/	/	/	1000
Dibutyl phthalate(DBP) CAS #:84-74-2	N.D.	N.D.	/	/	/	/	1000
Benzylbutyl phthalate(BBP) CAS #:85-68-7	N.D.	N.D.	/	/	/	/	1000
Di-2-ethylhexyl phthalate(DEHP) CAS #:117-81-7	N.D.	N.D.	/	/	/	/	1000

**NOTE:**

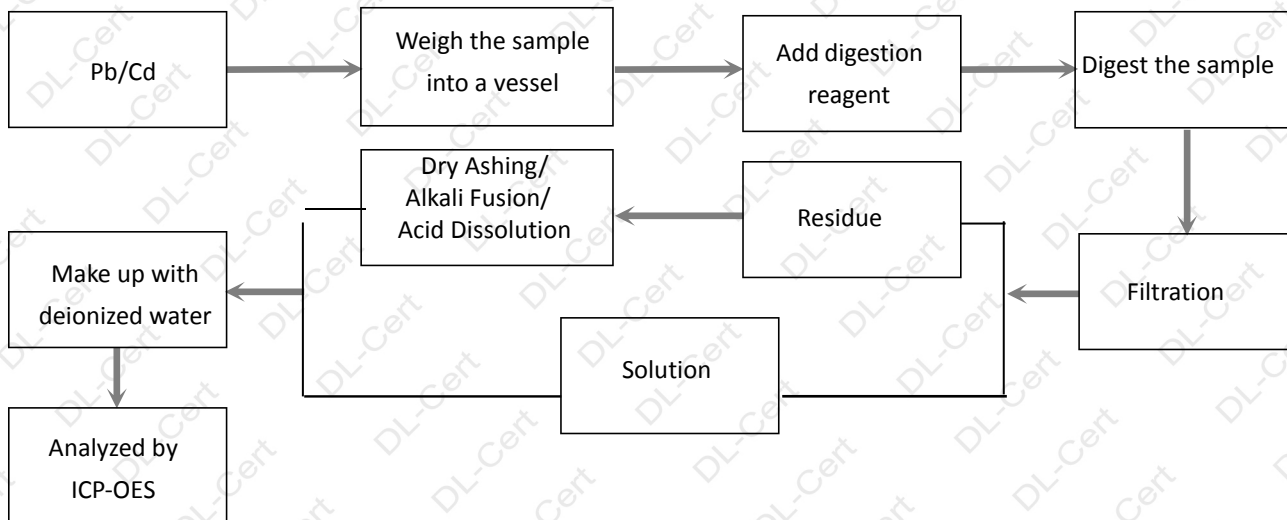
- (1) mg/kg = ppm=parts per million
- (2) N.D. = not detected (<MDL)
- (3) MDL=Method Detection Limit
- (4) “—”=Not regulated



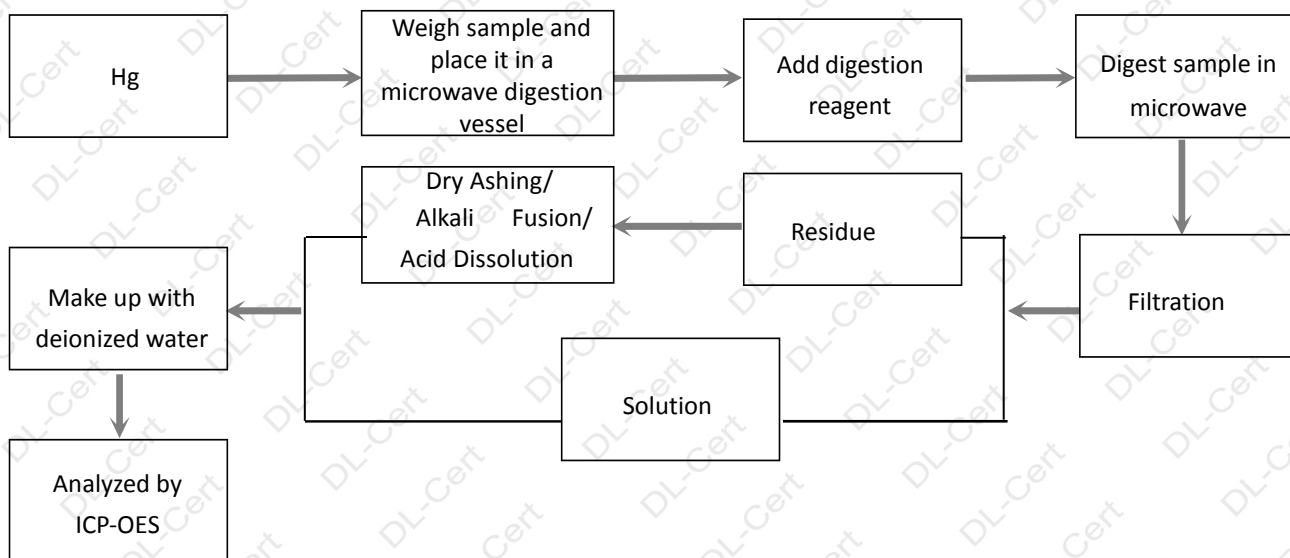
Test Process:

The sample(s) had been dissolved totally tested for Lead, Cadmium, Mercury.

◆ IEC 62321-5:2013 Ed.1.0

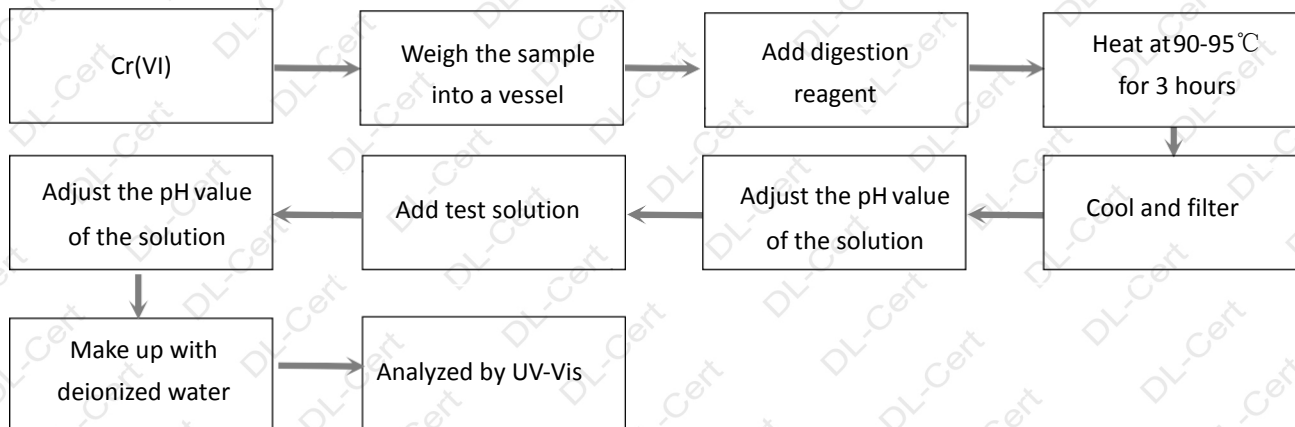


◆ IEC 62321-4:2013 Ed.1.0

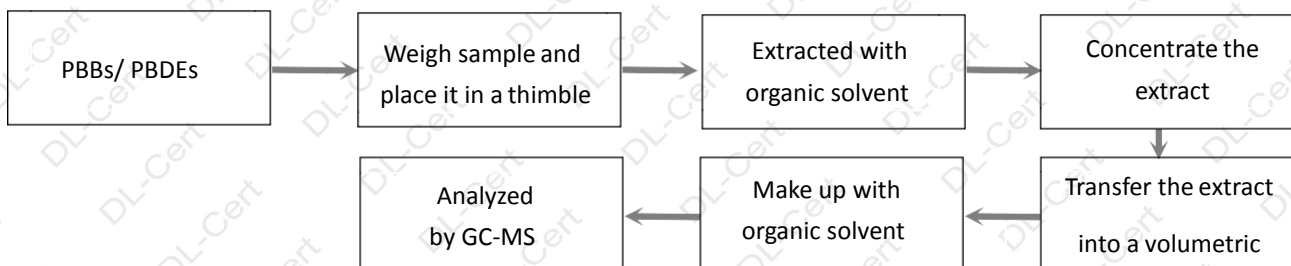




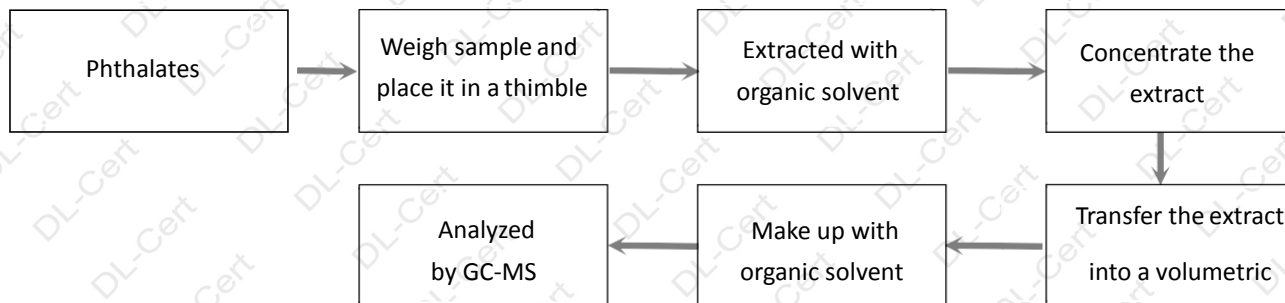
◆ IEC 62321-7-2:2017 Ed.1.0



◆ IEC 62321-6:2015 Ed.1.0

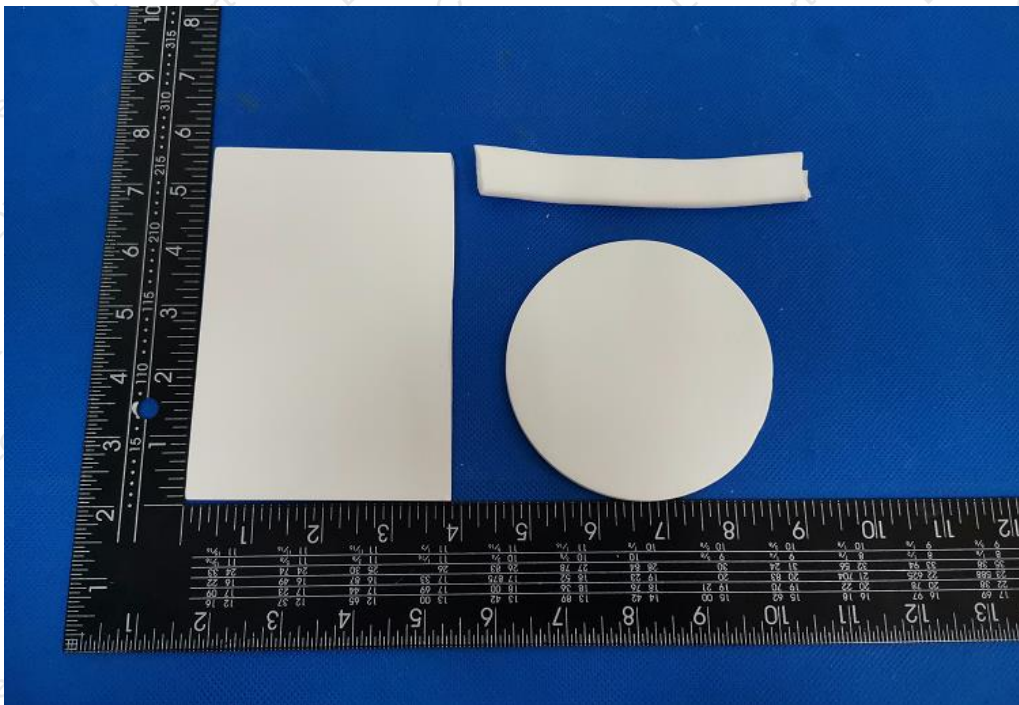
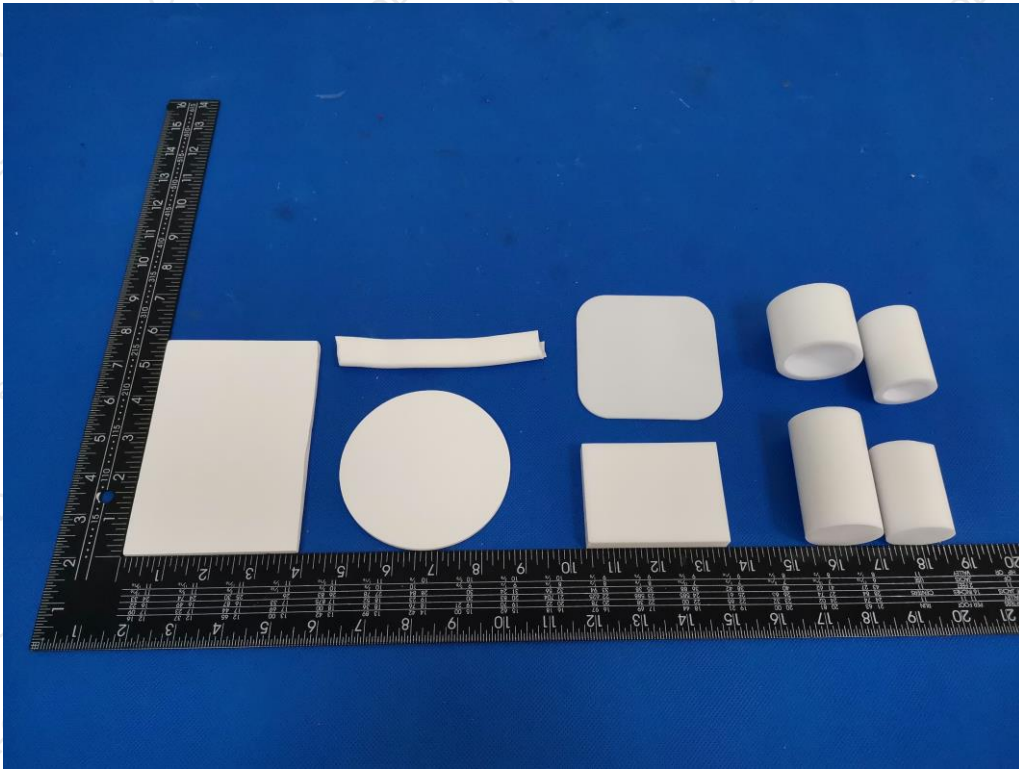


◆ IEC 62321-8:2017 Ed.1.0

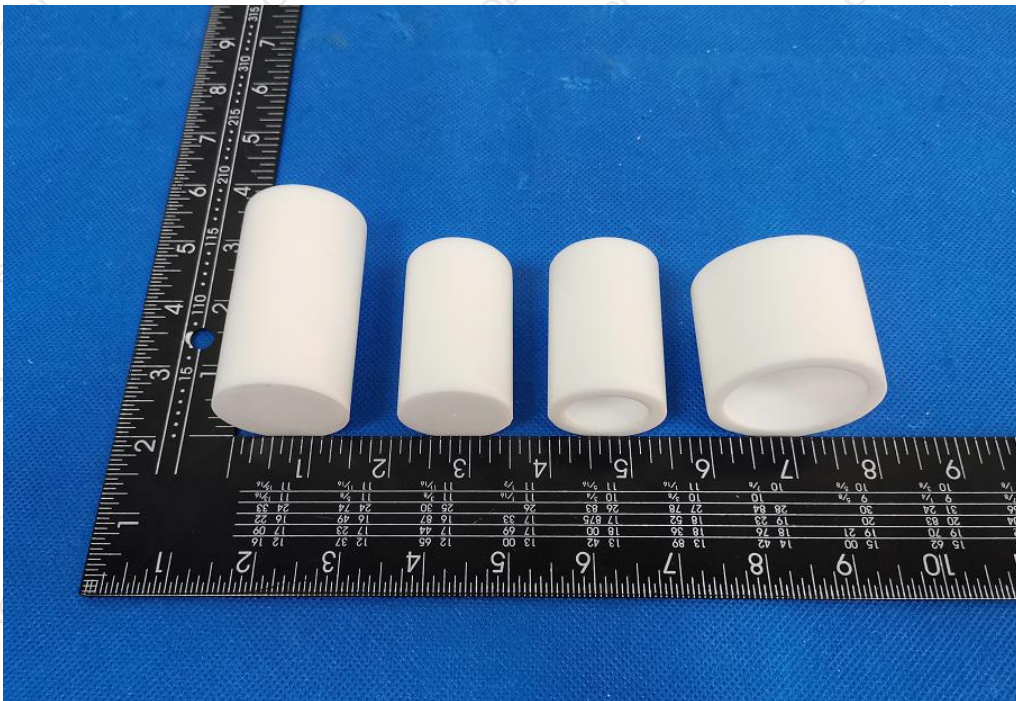
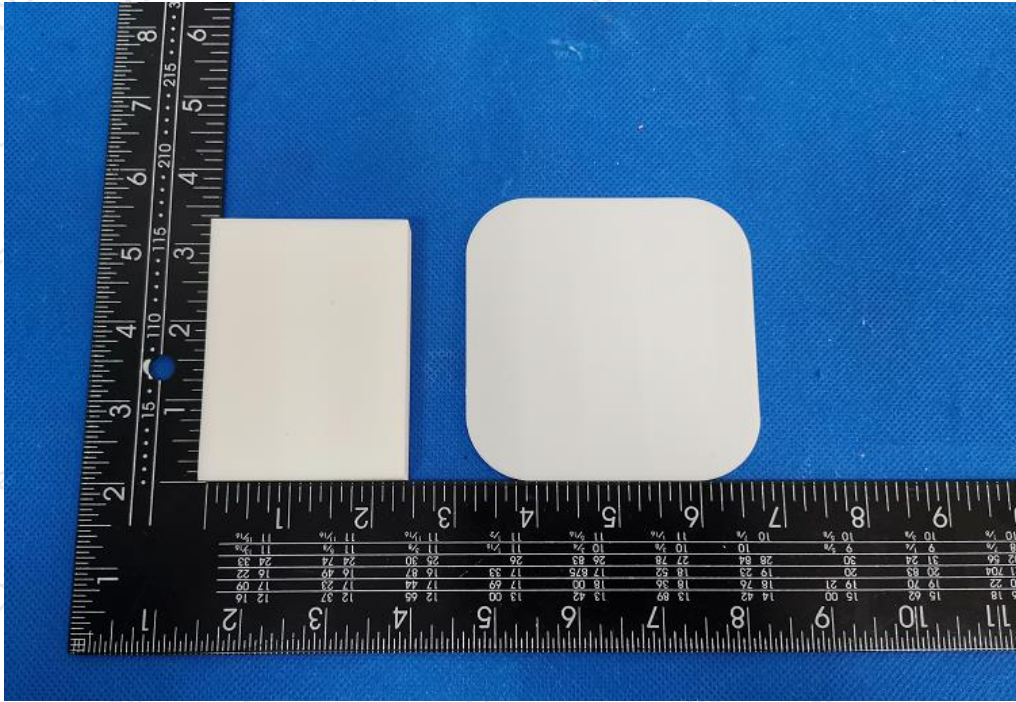




# EUT PHOTOGRAPHS







\*\*\*\*\* END OF REPORT \*\*\*\*\*